

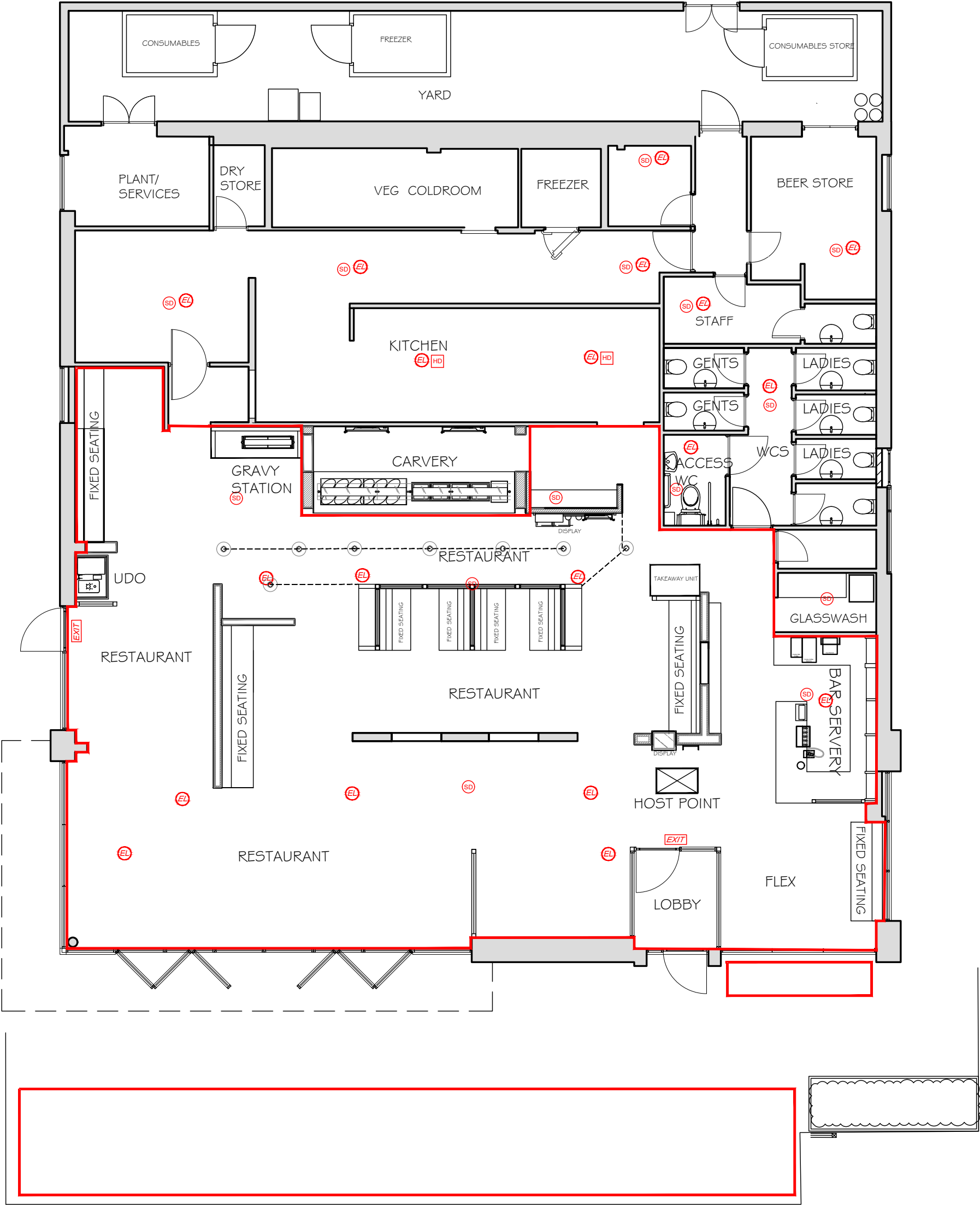
Licensing key

Areas for Licensable activities

Note:
Items shown on this plan which are not part of the statutory requirements are shown for indicative purposes only. This would include loose or fixed furniture in certain circumstances, the position of toilet cubicles, CCTV cameras and fire safety equipment not specified in the Regulations. These are shown upon the plans for illustrative purposes only and may be moved at the discretion of the license holder.

The current location of fire safety equipment and other safety equipment is not shown as these may be subject to variation in the future as necessary and where applicable in liaison with the Fire Officer. These may be subject to variation in the future as necessary and where applicable in liaison with the fire officer or after fire risk assessment.

REV:	DATE:	BY:	COMMENT:
A	10/08/23	JP	Revised after review.



Fire symbols

Fire alarm call point

Green em door release call point and test key

Smoke detector

Heat detector

Fire blanket

Alarm sounder

Combined alarm sounder and smoke detector

Fire action notice

"Fire door keep closed" signage

"Fire door keep locked" signage

"Automatic Fire door keep clear" signage

"Push bar to open" and "fire door keep clear" signage

FD30S 30min fire door with intumescent smoke seals

FD60S 60min fire door with intumescent smoke seals

Self closing device

Vision panel

Push bar ironmongery

3 hour self contained non-maintained luminaire

3 hour self contained and maintained luminaire with directional arrow where necessary

3 hour self contained and maintained external luminaire

Thumb turn door release - simple fastening

Mechanical heavy usage Diglock door release - simple fastening with dual backplate and hold open function

Xenon beacon unit with integral sounder to comply with the Equality Act 2010

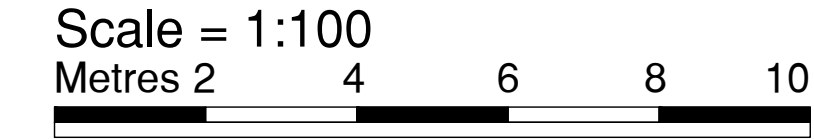
Xenon beacon unit to comply with the Equality Act 2010

Recessed/surface mounted fire alarm zone indicator/control panel

Magnetic door holder connected to fire alarm with fail safe release upon activation

Magnetic lock and fixing brackets with digital access control panel and push button release

Magnetic lock and fixing brackets with digital access keypad/keyfob access system and push button release



aba

architecture and interiors

globe works, kelham island, sheffield, s6 3ae 0114 201 5023

www.abaarchitecture.co.uk

CLIENT: MAB - TOBY CARVERY - F24 REMODEL

PROJECT: TC PETERBOROUGH BUN: 207772

ASHBOURNE ROAD,
HAMPTON,
PETERBOROUGH,
PE7 8BT

TITLE: PROPOSED GF LICENSING

INITIALS: PKT DATE: JULY 23 SCALE: 1:100 (A2)

NUMBER: 2514-101 REV: A STATUS: LICENSING